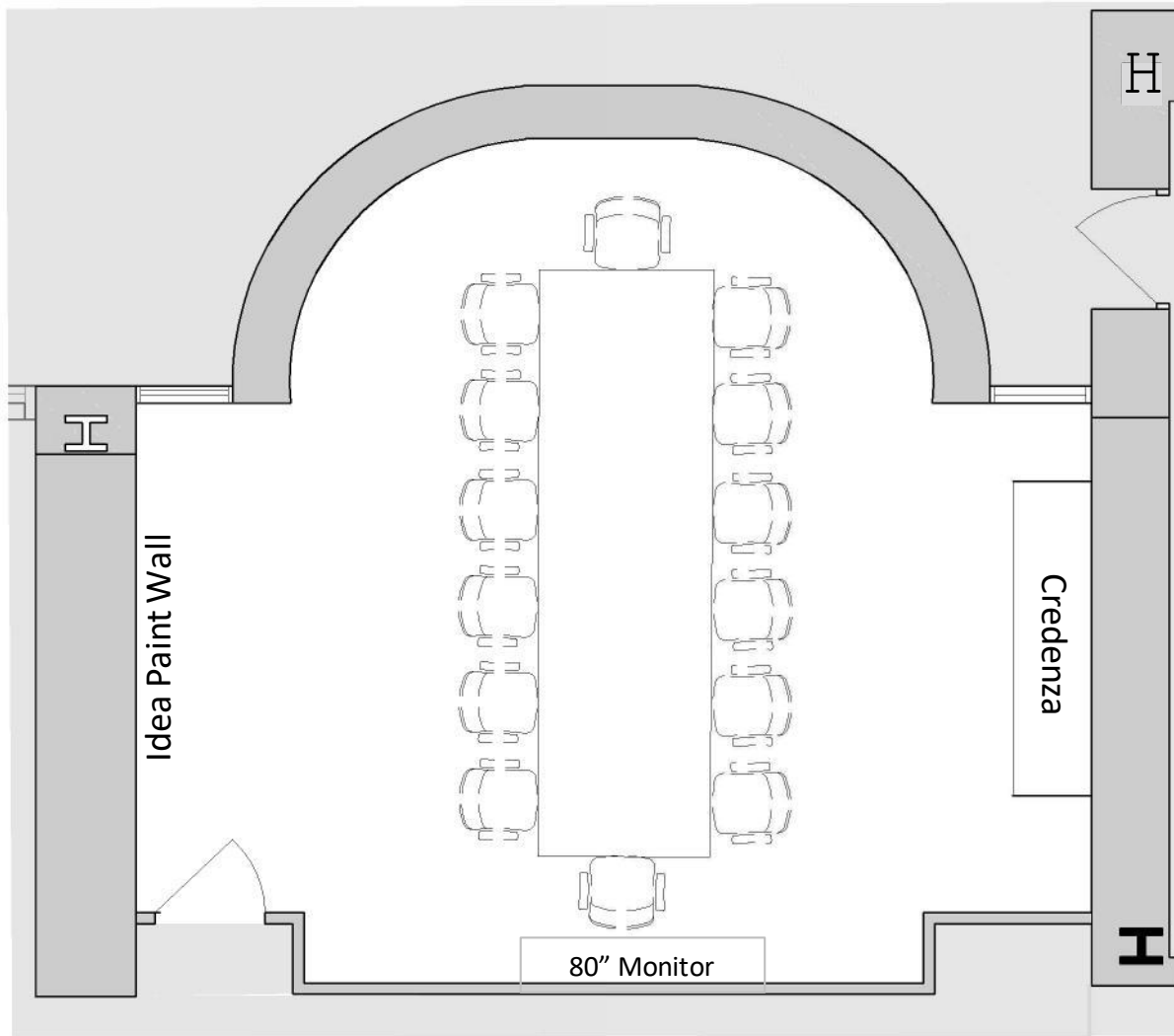
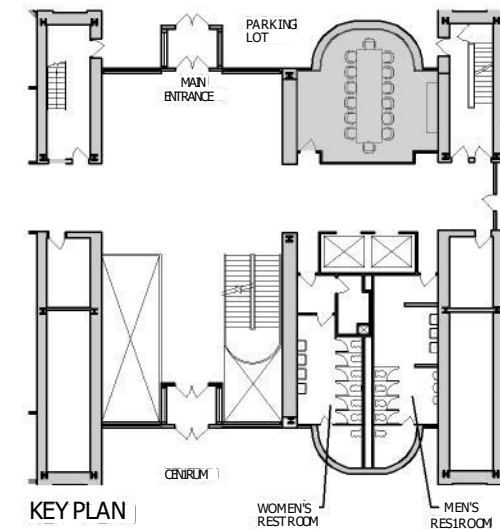


Equipment & Audio-Visual Amenities

- WIFI (Nassau Conference Room, Password = carnegie)
- Polycom (Phone # - 609-454-3162)
- Tabletop connection for presentation via HDMI & VGA Inputs
- 80" HD Flat Panel Monitor
- Idea Paint Wall



Seating Capacity = 14



NASSAU CONFERENCE ROOM

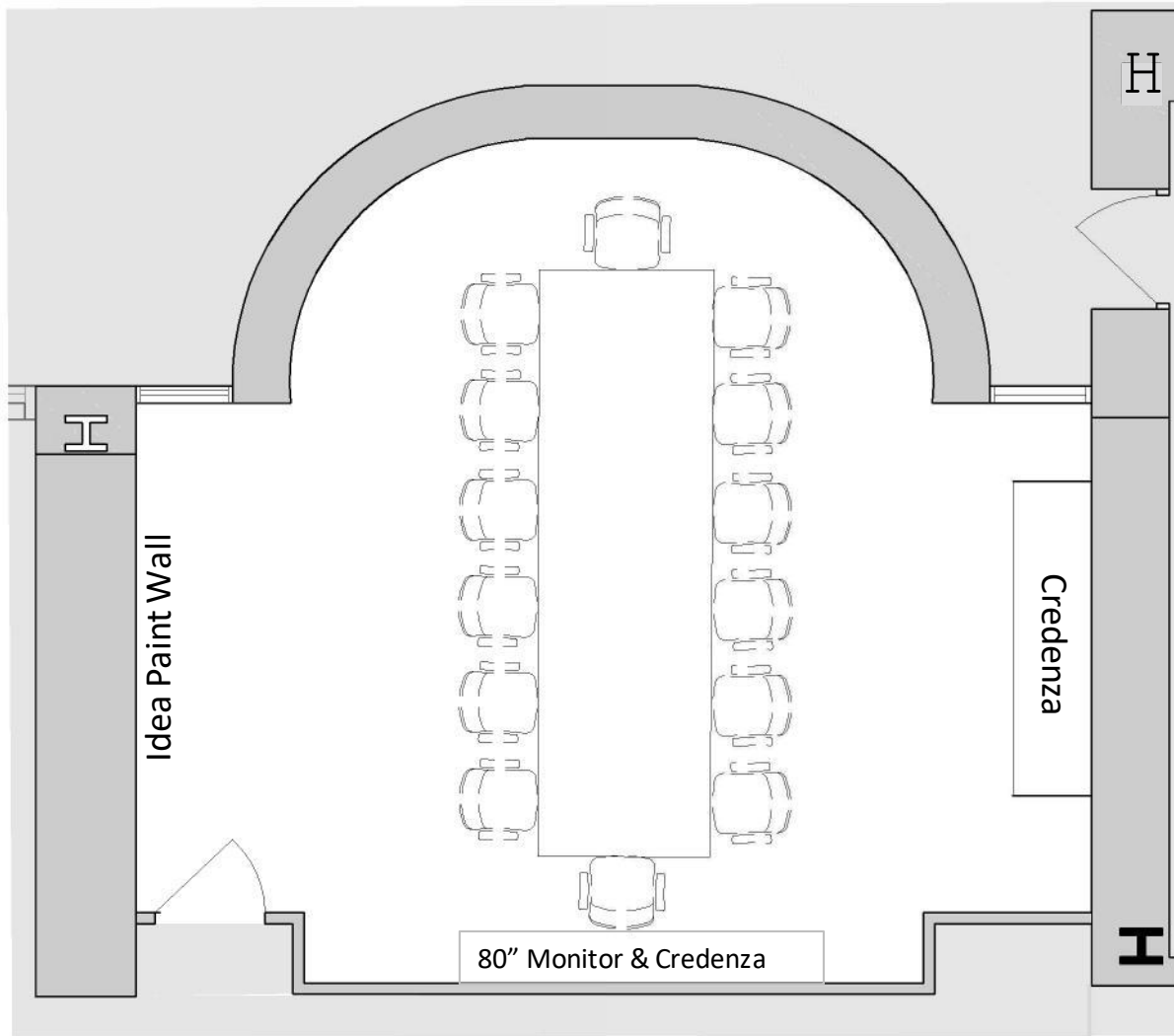
FLOOR ONE

101 CARNEGIECENTER
PRINCETON, NEW JERSEY

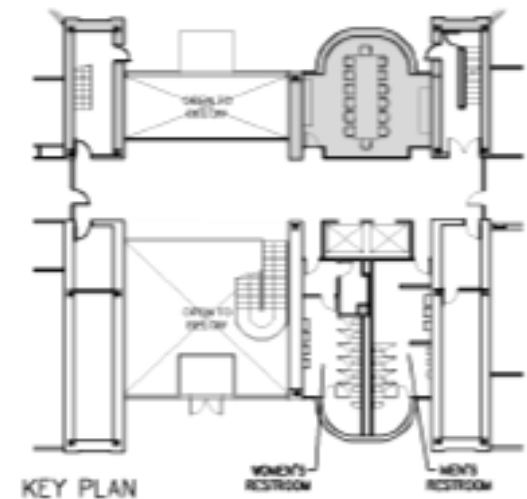
bxp Boston
Properties

Equipment & Audio-Visual Amenities

- WIFI (Witherspoon Conference Room, Password = carnegie)
- Polycom (Phone # - 609-285-5967)
- Tabletop connection for presentation via HDMI & VGA Inputs
- 80" HD Flat Panel Monitor
- Idea Paint Wall



Seating Capacity = 14

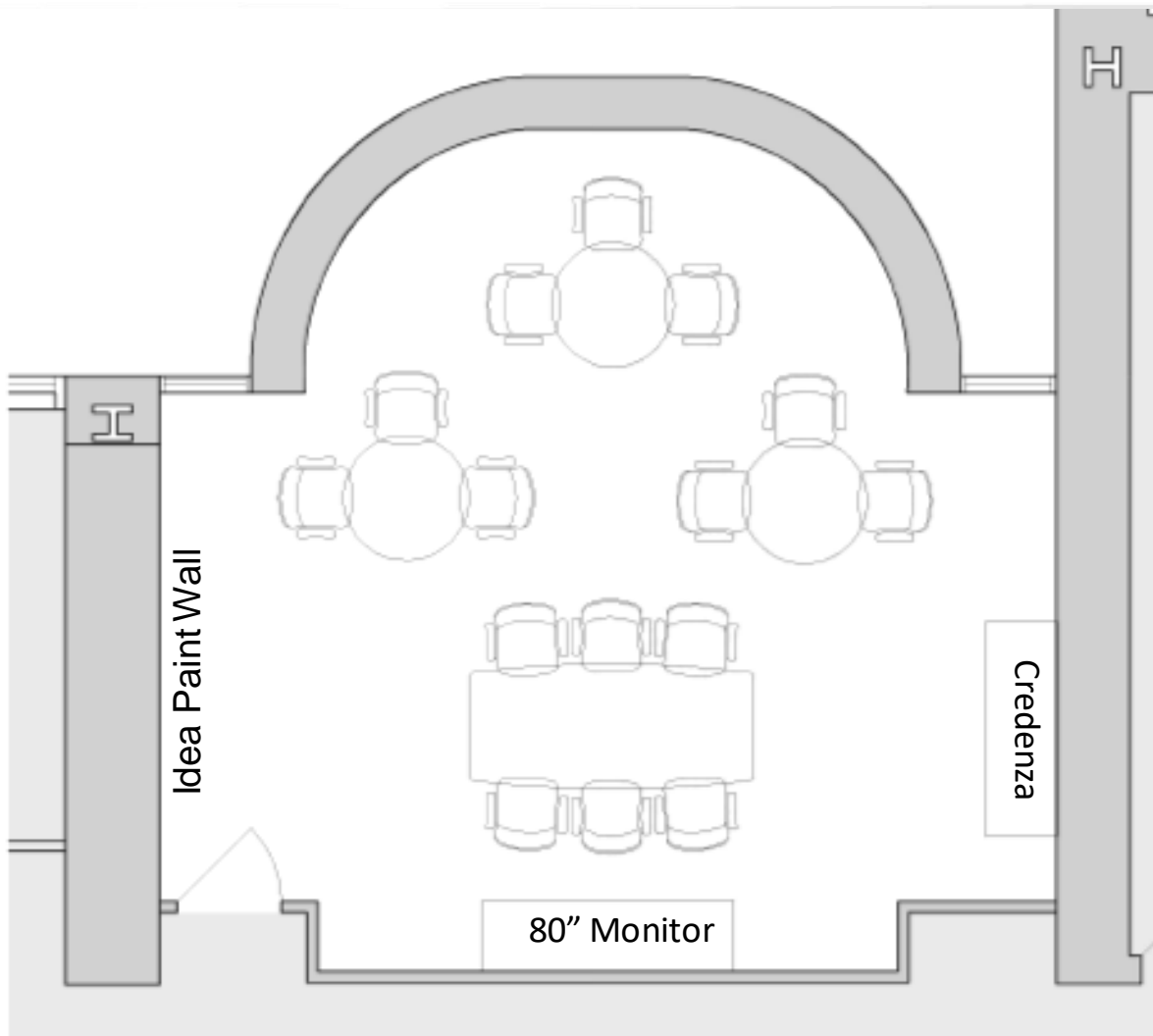


WITHERSPOON CONFERENCE ROOM

FLOOR TWO

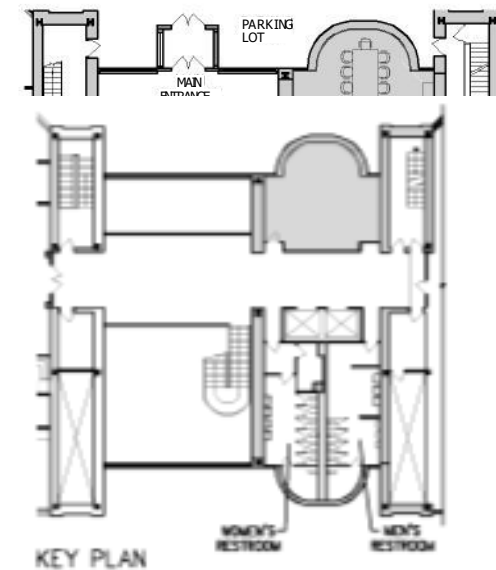
101 CARNEGIE CENTER
PRINCETON, NEW JERSEY

bxp Boston
Properties



- WIFI (Wilson Conference Room, Password = carnegie)
- Polycom (Phone # - 609-250-7133)
- Tabletop connection for presentation via HDMI & VGA Inputs
- 80" HD Flat Panel Monitor
- Polycom Videoconferencing for video calls
- Creston Control Panel to control all room devices

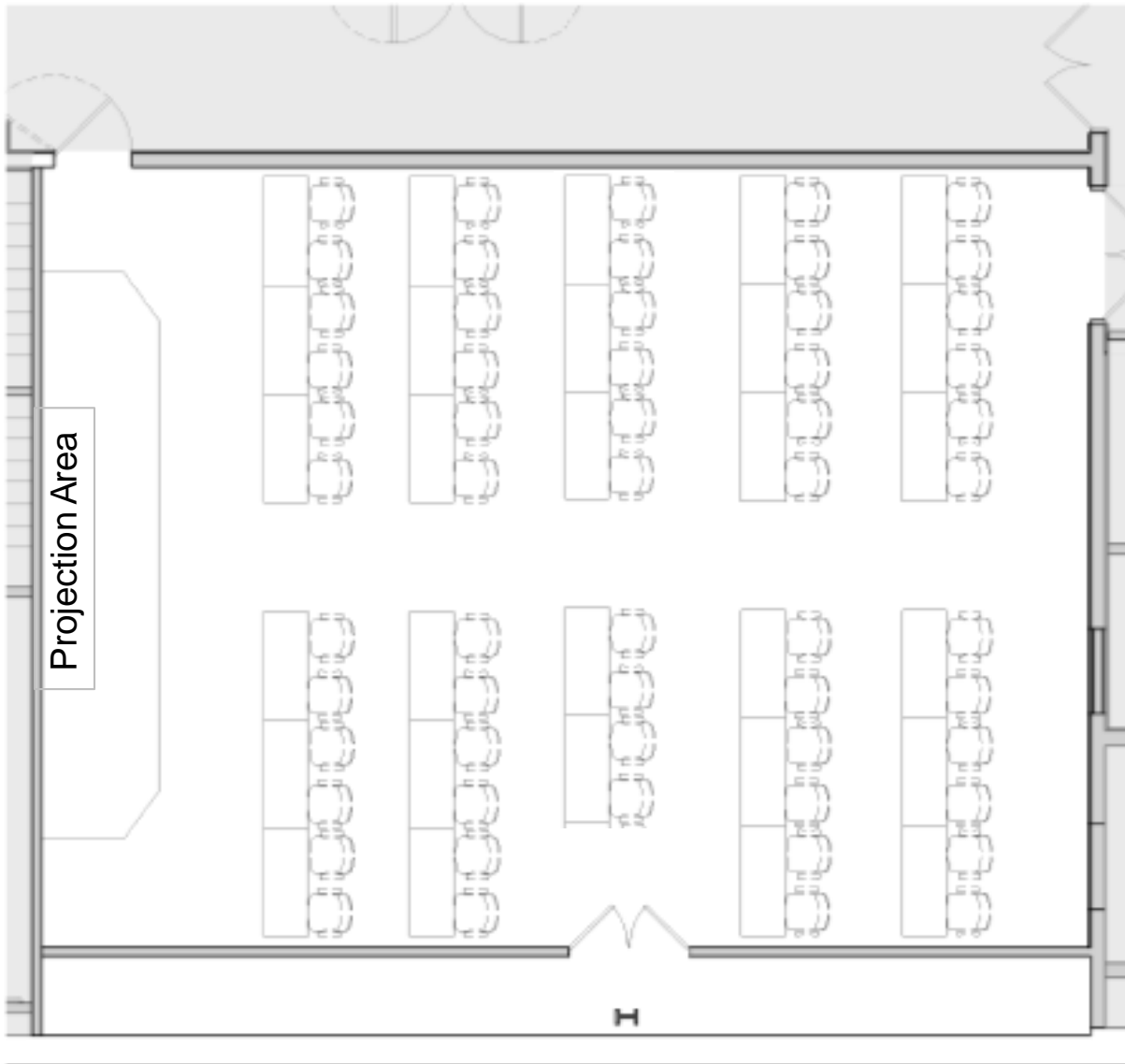
Maximum Capacity = 15



Equipment & Audio-Visual Amenities

- WIFI (Einstein Conference Room, Password = carnegie)
- Crestron Audio Teleconferencing (Phone # - 609-454-5727)
- Computer HDMI & VGA Inputs (located in the podium and/or in floor box)
- NEC Overhead Projector with 7'8" x 6' Projection Area
- Podium with Microphone
- Ceiling and Program Speakers
- Ceiling Microphones

Seating Capacity (Classroom Style) = 40-60



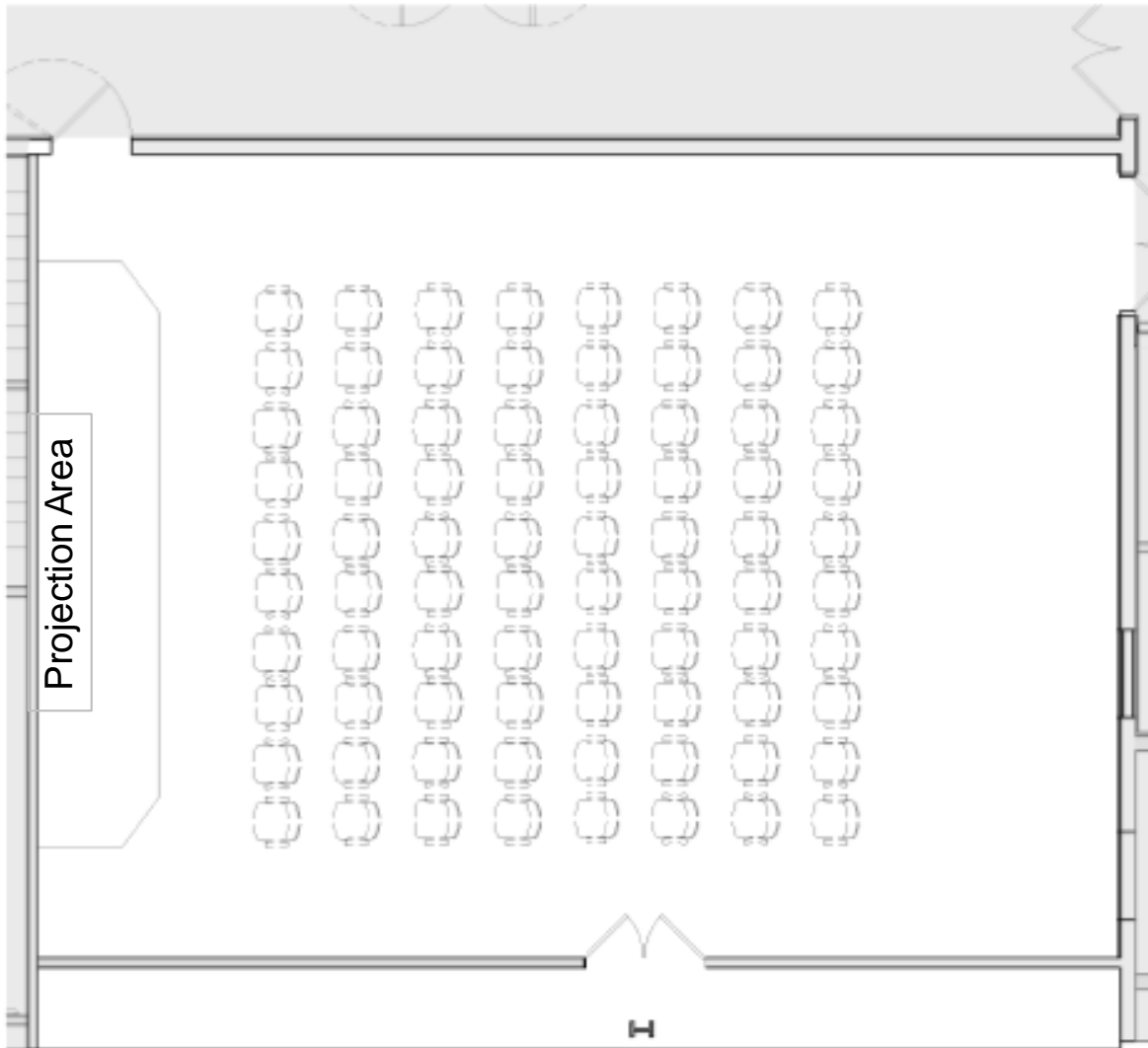
KEY PLAN

EINSTEIN SEMINAR ROOM – CLASSROOM LAYOUT

LOWER LEVEL

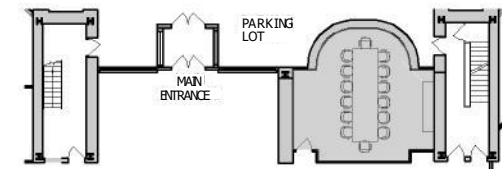
101 CARNEGIE CENTER
PRINCETON, NEW JERSEY

bxp Boston
Properties



Equipment & Audio-Visual Amenities

- WIFI (Einstein Conference Room, Password = carnegie)
- Crestron Audio Teleconferencing (Phone # - 609-454-5727)
- Computer HDMI & VGA Inputs (located in the podium and/or in floor box)
- NEC Overhead Projector with 7'8" x 6' Projection Area
- Podium with Microphone
- Ceiling and Program Speakers
- Ceiling Microphones



KEY PLAN

**Seating Capacity (Theater Style)
= Up to 80**

EINSTEIN SEMINAR ROOM – THEATER LAYOUT

LOWER LEVEL

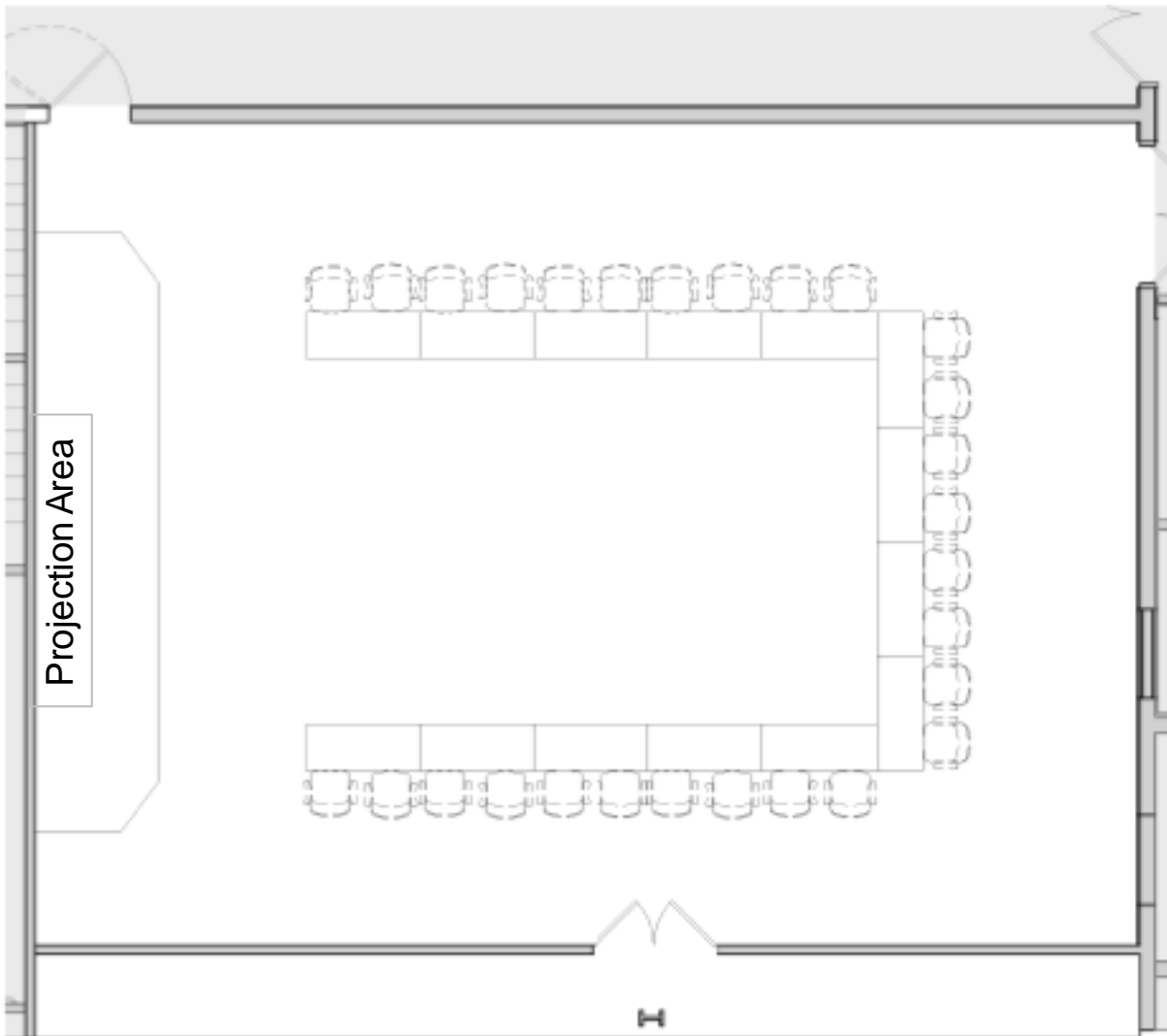
101 CARNEGIE CENTER
PRINCETON, NEW JERSEY

bxp Boston
Properties

Equipment & Audio-Visual Amenities

- WIFI (Einstein Conference Room, Password = carnegie)
- Crestron Audio Teleconferencing (Phone # - 609-454-5727)
- Computer HDMI & VGA Inputs (located in the podium and/or in floor box)
- NEC Overhead Projector with 7'8" x 6' Projection Area
- Podium with Microphone
- Ceiling and Program Speakers
- Ceiling Microphones

**Seating Capacity (U-Shape) =
up to 24**



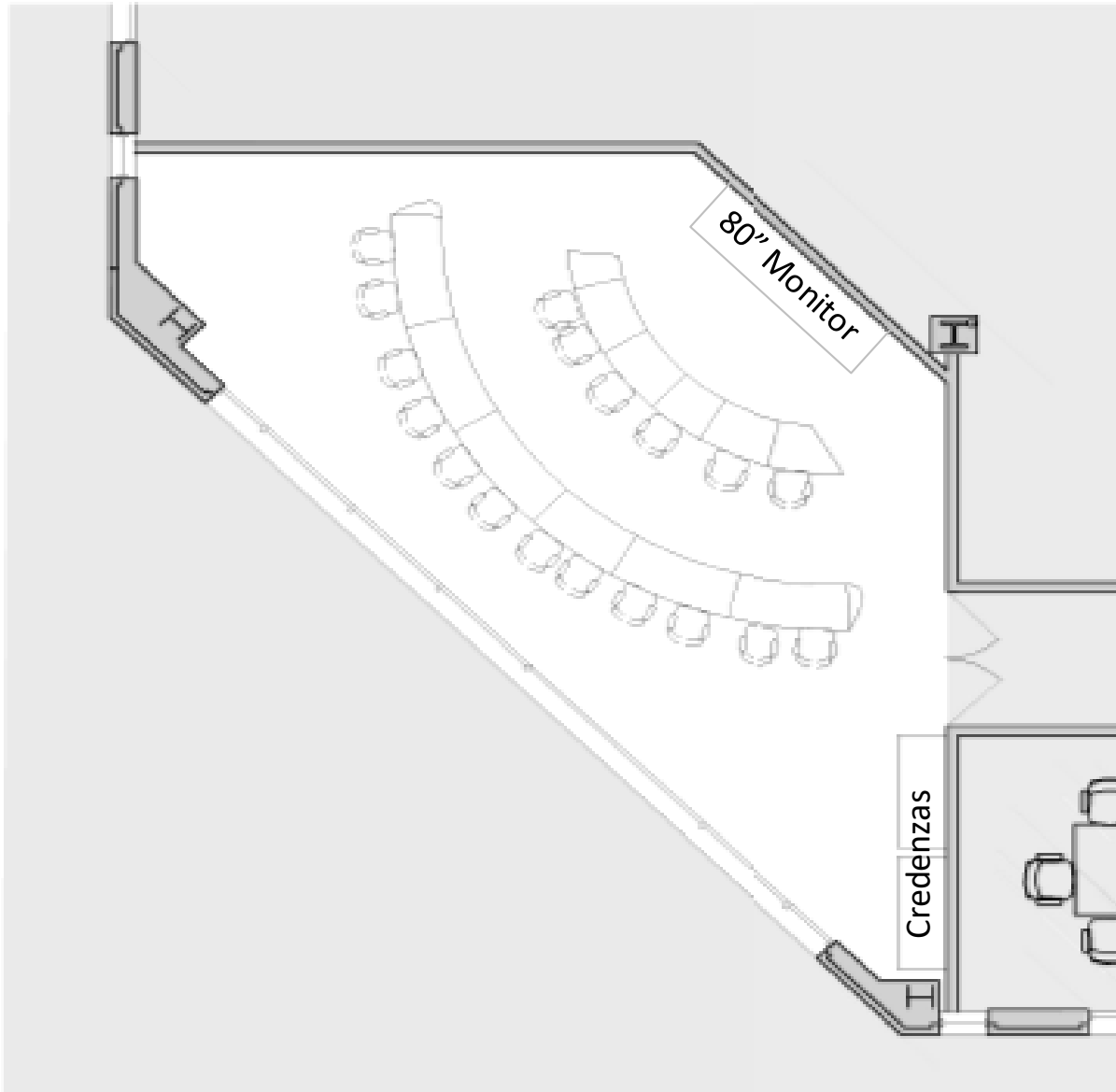
KEY PLAN

EINSTEIN SEMINAR ROOM – U-SHAPE LAYOUT

LOWER LEVEL

101 CARNEGIE CENTER
PRINCETON, NEW JERSEY

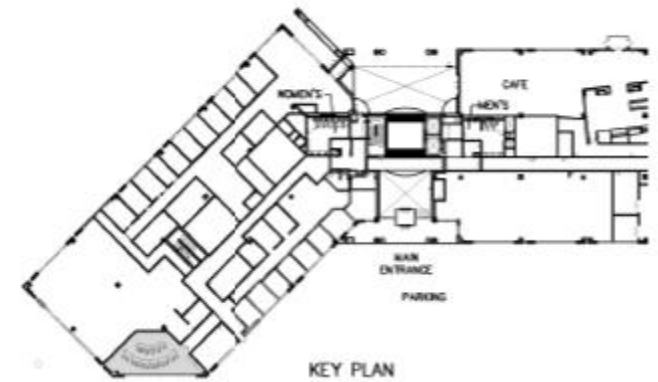
bxp Boston
Properties



Equipment & Audio-Visual Amenities

- WIFI (Princeton-Conference-Room, Password = carnegie)
- Crestron Audio Teleconferencing (Phone # - 609-423-2298)
- Tabletop connection for presentation via HDMI & VGA Inputs
- 80" HD Flat Panel Monitor
- Polycom Videoconferencing for video calls
- Creston Control Panel to control all room devices

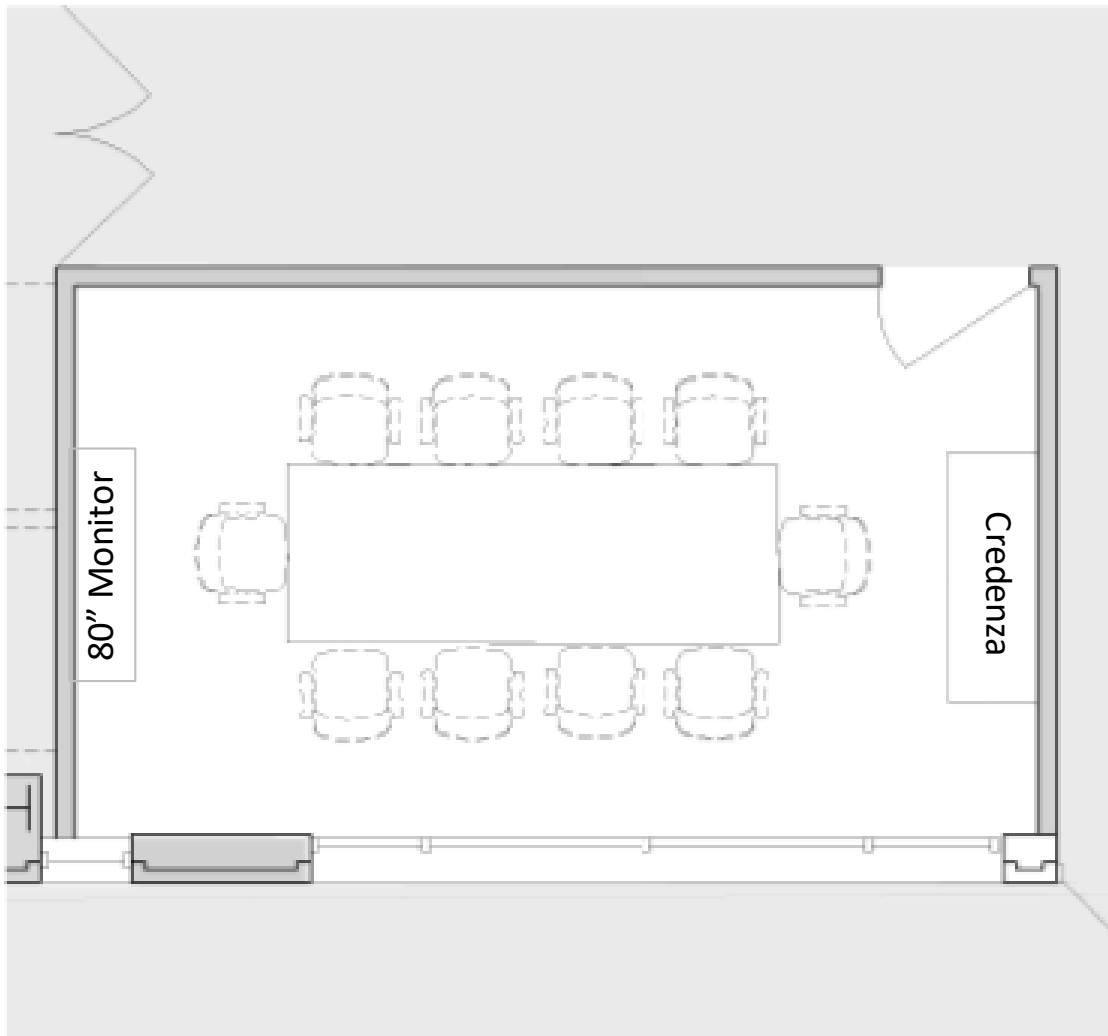
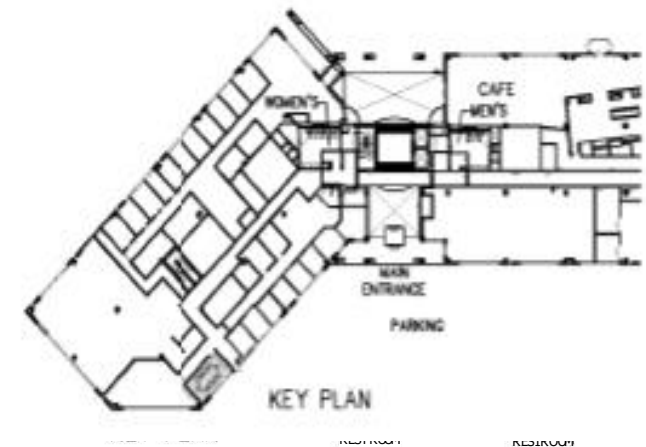
Seating Capacity = 18



Equipment & Audio-Visual Amenities

- WIFI (Windsor-Conference-Room, Password = carnegie)
- Polycom Telephone (Phone # - 609-423-2297)
- Computer HDMI & VGA Inputs
- 80" HD Flat Panel Monitor

Seating Capacity = 10



WINDSOR CONFERENCE ROOM

FLOOR ONE

506 CARNEGIECENTER
PRINCETON, NEW JERSEY

bxp Boston
Properties